



Jim Stone Elementary Play by Play

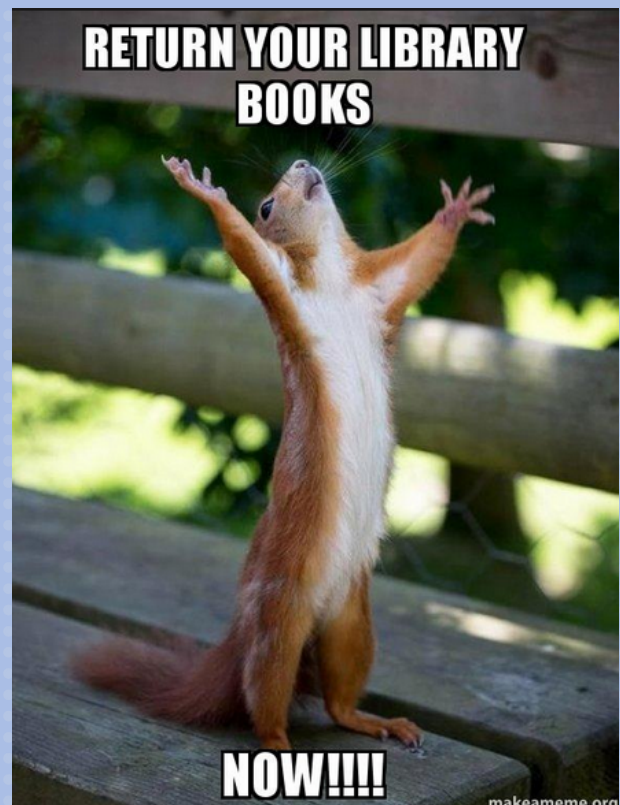
May 11, 2018

Upcoming Dates

May 21: Stallion Stampede

May 24: Last Day of School

*Thank you PTO and parents
for making Teacher
Appreciation Week
awesome!*



The Stallion Stampede and Field Day is quickly approaching! We need lots of volunteers to make the day go smoothly for the kids.

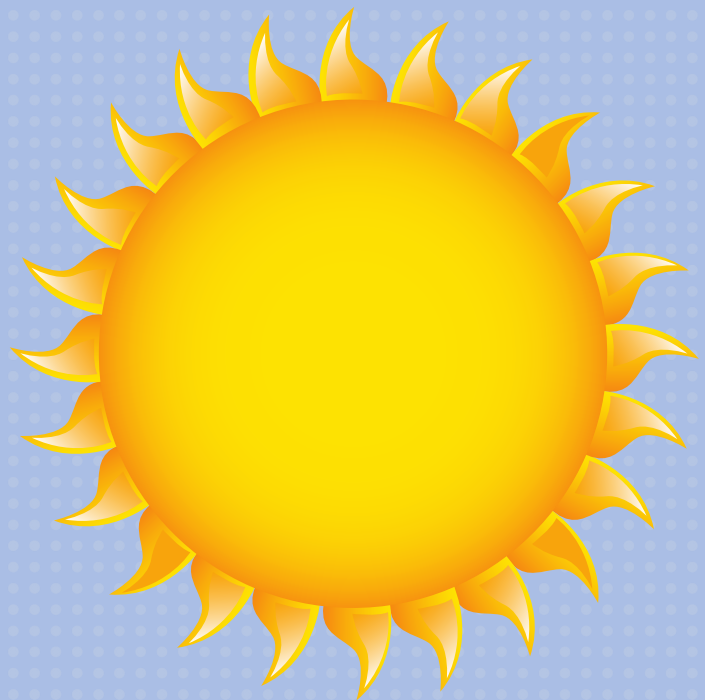
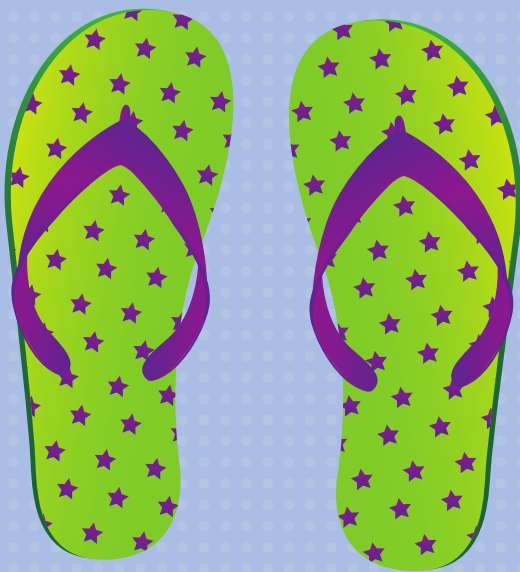
The Stampede/Field Day is Monday, May 21st so mark your calendars, and pick a slot or two to volunteer.

<https://www.signupgenius.com/go/30e0d4ca8af23a3fb6-20181>



In light of recent events, we want to remind everyone that you must have a photo ID prior to entering the building – **no exceptions**. Please have your ID ready to show to the camera after ringing the doorbell at the front entrance of the building. You will need to keep your ID available for scanning into our Hallpass visitor system after reporting to the front office.

Thank you for your cooperation as we continually review our building procedures to ensure the safety of our students, parents, and staff.





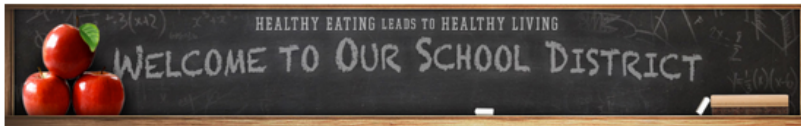
Conway School District Breakfast 2017-2018 Conway May 2018

[<< Previous Week](#)

[Next Week >>](#)

| Mon | Tue | Wed | Thu | Fri |
|---|---|--|--|---|
| <p>14</p> <p>Breakfast Entree Mini Maple Pancakes w/Turkey Bacon Assorted Yogurt Parfaits w/Granola Mini Sausage Biscuits Variety Whole Grain Muffins Assorted Whole Grain Cereal Variety Whole Grain Breads Glazed Breakfast Bun Kellogg's Whole Grain Pop-tarts Variety Whole Grain Donuts</p> <p>Fruit Assorted Juice Fruit Choice</p> <p>Milk White 1% Low Fat Milk Flavored Skim Milk</p> | <p>15</p> <p>Breakfast Entree Dutch Waffle w/Chicken Rings Assorted Yogurt Parfaits w/Granola Mini Sausage Biscuits Variety Whole Grain Muffins Assorted Whole Grain Cereal Variety Whole Grain Breads Glazed Breakfast Bun Kellogg's Whole Grain Pop-tarts Variety Whole Grain Donuts</p> <p>Fruit Assorted Juice Fruit Choice</p> <p>Milk White 1% Low Fat Milk Flavored Skim Milk</p> | <p>16</p> <p>Breakfast Entree WG Pancake & Sausage on a Stick w/Syrup Assorted Yogurt Parfaits w/Granola Mini Sausage Biscuits Variety Whole Grain Muffins Assorted Whole Grain Cereal Variety Whole Grain Breads Glazed Breakfast Bun Kellogg's Whole Grain Pop-tarts Variety Whole Grain Donuts</p> <p>Fruit Assorted Juice Fruit Choice</p> <p>Milk White 1% Low Fat Milk Flavored Skim Milk</p> | <p>17</p> <p>Breakfast Entree Breakfast Pizza Assorted Yogurt Parfaits w/Granola Mini Sausage Biscuits Variety Whole Grain Muffins Assorted Whole Grain Cereal Variety Whole Grain Breads Glazed Breakfast Bun Kellogg's Whole Grain Pop-tarts Variety Whole Grain Donuts</p> <p>Fruit Assorted Juice Fruit Choice</p> <p>Milk White 1% Low Fat Milk Flavored Skim Milk</p> | <p>18</p> <p>Breakfast Entree French Toast Sticks w/ Sausage Patty & Syrup Assorted Yogurt Parfaits w/Granola Variety Whole Grain Muffins Assorted Whole Grain Cereal Variety Whole Grain Breads Glazed Breakfast Bun Kellogg's Whole Grain Pop-tarts Variety Whole Grain Donuts</p> <p>Fruit Assorted Juice Fruit Choice</p> <p>Milk White 1% Low Fat Milk Flavored Skim Milk</p> |

This institution is an equal opportunity provider.



Conway School District Lunch Elementary 2017-2018 Conway May 2018

[<< Previous Week](#)

[Next Week >>](#)

| Mon | Tue | Wed | Thu | Fri |
|--|---|---|--|---|
| <p>14</p> <p>Lunch Entree Chicken w/ Potatoes & Roll Grilled Cheese Sandwich w/Chicken Noodle Soup Yogurt w/ Cheese Cubes & Goldfish Crackers</p> <p>Vegetables Lemon Pepper Broccoli Apple & Eve Veggie Blend Juice Box</p> <p>Fruit Applesauce Cup Sour Cherry & Lemon Fruit Ice</p> <p>Milk White 1% Low Fat Milk Chocolate Skim Milk</p> | <p>15</p> <p>Lunch Entree BREAKFAST FOR LUNCH Pancakes w/ Scrambled Eggs, Sausage, & Syrup Cheeseburger w/ Nacho Cheese Doritos Yogurt w/ Cheese Cubes & Goldfish Crackers</p> <p>Vegetables Garden Salad w/ Ranch Dressing Cucumber Slices</p> <p>Fruit Strawberry Cup Apple & Eve Apple Juice Box</p> <p>Milk White 1% Low Fat Milk Chocolate Skim Milk</p> | <p>16</p> <p>Lunch Entree Beef & Cheese Nachos Mini Turkey Corn Dog w/ Crunchy Cheetos Yogurt w/ Cheese Cubes & Goldfish Crackers</p> <p>Vegetables Taco Soup Baby Carrots</p> <p>Fruit Strawberry & Banana Fruit Cup Apple & Eve Fruit Punch Juice Box</p> <p>Milk White 1% Low Fat Milk Chocolate Skim Milk</p> | <p>17</p> <p>Lunch Entree Popcorn Chicken w/ Potatoes & Roll Hot Ham & Cheese Melt w/ Potato Crisps Yogurt w/ Cheese Cubes & Goldfish Crackers</p> <p>Vegetables BBQ Baked Beans Cherry Tomatoes</p> <p>Fruit Blueberries w/ Whipped Topping Apple & Eve Mixed Berry Juice Box</p> <p>Milk White 1% Low Fat Milk Chocolate Skim Milk</p> | <p>18</p> <p>Lunch Entree Pizza Crunchers w/ Marinara Sauce Turkey & Cheese Wrap w/ Chips Yogurt w/ Cheese Cubes & Goldfish Crackers</p> <p>Vegetables Garden Salad w/ Ranch Dressing Celery Sticks</p> <p>Fruit Peach Cup Apple & Eve Orange Tangerine Juice Box</p> <p>Milk White 1% Low Fat Milk Chocolate Skim Milk</p> |

This institution is an equal opportunity provider.



PLEASE RE-ENROLL
ALL PARTICIPANTS ARE REQUIRED TO RE-ENROLL EACH YEAR
It's really easy. [Click here for more information.](#)

To Enroll in the Kroger Community Rewards Program:

1. Register online at krogercommunityrewards.com.
2. Be sure to have your Kroger plus card handy. If you don't have one, they are available at the customer service desk at Kroger.
3. Click on Sign In/Register. If you don't have an online Kroger account, click on Sign Up Today in the New Customer box and follow the directions to create an account. Choose Salem Road as your favorite store. If you do have an account, click on My Account and use your email address and password to proceed to the next step.
4. Click on Edit Kroger Community Rewards information and input your Kroger Plus card number.
5. Update or Confirm your information.
6. Enter **NPO #96365**, select Jim Stone from the list and click on confirm.
7. To verify you are enrolled correctly, you will see Jim Stone Elementary's name on the right side of your information page.
8. REMEMBER, purchases will not count until you register your card and you must swipe your card when shopping for purchases to count.
9. Do you use your phone number at the register? Call 800-576-4377, select option 4 to get your Kroger Plus card number.