



Jim Stone Elementary Weekly Blueprint

September 7, 2018

Upcoming Dates

September 20: PTO Meeting and Parent Night @ 6pm

Fundraiser begins September 7 and goes through September 24. Help us raise funds for classroom sound systems.



Monthly Gardening Newsletter

Jim Stone is participating in the Farm to School Program. We have a small raised garden that we will soon be preparing for cool weather planting.

As part of the program we receive a monthly gardening newsletter from the County Extension Service. These will be posted for all the garden enthusiasts in the Jim Stone family. Please look for the link under PE Locker Room on the Jim Stone website.

The September newsletter is already available.

Laurel Breashears



Conway School District Breakfast 2018-2019 Conway September 2018

[<< Previous Week](#)

[Next Week >>](#)

Mon	Tue	Wed	Thu	Fri
10	11	12	13	14
<p>Breakfast Entree Mini Maple Pancakes w/Turkey Bacon Sausage, Egg, & Cheese Breakfast Sliders Strawberry Yogurt Parfait w/ Homemade Chocolate Granola Assorted Whole Grain Cereal Variety Whole Grain Muffins Kellogg's Whole Grain Pop-tarts Variety Whole Grain Donuts</p> <p>Fruit Fruit Choice Apple & Eve Fruit Juice</p> <p>Milk White 1% Low Fat Milk Chocolate Skim Milk</p>	<p>Breakfast Entree Dutch Waffle w/Chicken Rings Sausage, Egg, & Cheese Breakfast Sliders Strawberry Yogurt Parfait w/ Homemade Chocolate Granola Assorted Whole Grain Cereal Variety Whole Grain Muffins Kellogg's Whole Grain Pop-tarts Variety Whole Grain Donuts</p> <p>Fruit Fruit Choice Apple & Eve Fruit Juice</p> <p>Milk White 1% Low Fat Milk Chocolate Skim Milk</p>	<p>Breakfast Entree WG Pancake & Sausage on a Stick w/Syrup Sausage, Egg, & Cheese Breakfast Sliders Strawberry Yogurt Parfait w/ Homemade Chocolate Granola Assorted Whole Grain Cereal Variety Whole Grain Muffins Kellogg's Whole Grain Pop-tarts Variety Whole Grain Donuts</p> <p>Fruit Fruit Choice Apple & Eve Fruit Juice</p> <p>Milk White 1% Low Fat Milk Chocolate Skim Milk</p>	<p>Breakfast Entree Egg, Turkey Sausage, & Cheese Breakfast Tornado Sausage, Egg, & Cheese Breakfast Sliders Strawberry Yogurt Parfait w/ Homemade Chocolate Granola Assorted Whole Grain Cereal Variety Whole Grain Muffins Kellogg's Whole Grain Pop-tarts Variety Whole Grain Donuts</p> <p>Fruit Fruit Choice Apple & Eve Fruit Juice</p> <p>Milk White 1% Low Fat Milk Chocolate Skim Milk</p>	<p>Breakfast Entree French Toast Sticks w/ Sausage & Syrup Sausage, Egg, & Cheese Breakfast Sliders Assorted Whole Grain Cereal Strawberry Yogurt Parfait w/ Homemade Chocolate Granola Variety Whole Grain Muffins Kellogg's Whole Grain Pop-tarts Variety Whole Grain Donuts</p> <p>Fruit Fruit Choice Apple & Eve Fruit Juice</p> <p>Milk White 1% Low Fat Milk Chocolate Skim Milk</p>

This institution is an equal opportunity provider.



Conway School District Lunch Elementary 2018-2019 Conway September 2018

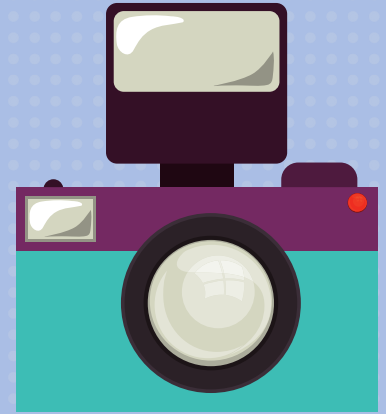
[<< Previous Week](#)

[Next Week >>](#)

Mon	Tue	Wed	Thu	Fri
10	11	12	13	14
<p>Lunch Entree Chicken Breast Nuggets w/ Curly Fries & Biscuit Corn Dog w/ Crunchy Cheetos Yogurt w/ Cheese Cubes & Goldfish Crackers</p> <p>Vegetables Fresh Garden Vegetable Cup Corn Shaker Salad</p> <p>Fruit Fresh Apple Slices Strawberry Mango Fruit Ice Apple & Eve Fruit Juice</p> <p>Milk White 1% Low Fat Milk Chocolate Skim Milk</p>	<p>Lunch Entree BREAKFAST FOR LUNCH - Scrambled Eggs, Turkey Bacon, Biscuit w/ Jelly, & Breakfast Potatoes Cheeseburger w/ Nacho Cheese Doritos Yogurt w/ Cheese Cubes & Goldfish Crackers</p> <p>Vegetables Fresh Garden Vegetable Cup Shaker Garden Salad</p> <p>Fruit Blueberries w/ Whipped Topping Apple & Eve Fruit Juice</p> <p>Milk White 1% Low Fat Milk Chocolate Skim Milk</p>	<p>Lunch Entree Chicken & Cheese Taquitos w/ Salsa Chicken Alfredo w/ Garlic Texas Toast Yogurt w/ Cheese Cubes & Goldfish Crackers</p> <p>Vegetables Fresh Garden Vegetable Cup Mexican Bean Dip w/ Tortilla Chips</p> <p>Fruit Fresh Grapes Apple & Eve Fruit Juice</p> <p>Milk White 1% Low Fat Milk Chocolate Skim Milk</p>	<p>Lunch Entree Chicken Tenders w/ Homemade Macaroni & Cheese & Roll Mini Beef Hot Dog w/ Homemade Macaroni & Cheese Yogurt w/ Cheese Cubes & Goldfish Crackers</p> <p>Vegetables Fresh Garden Vegetable Cup Strawberry Spinach Shaker Salad</p> <p>Fruit Mango, Peach & Pineapple Fruit Cup Apple & Eve Fruit Juice</p> <p>Milk White 1% Low Fat Milk Chocolate Skim Milk</p>	<p>Lunch Entree Papa Murphy's Pepperoni Pizza Crispy Chicken Breast Filet Sandwich w/ Cool Ranch Doritos Yogurt w/ Cheese Cubes & Goldfish Crackers</p> <p>Vegetables Fresh Garden Vegetable Cup Crunchy Pea Shaker Salad</p> <p>Fruit Applesauce Cup Fruit Choice Apple & Eve Fruit Juice</p> <p>Desserts Chocolate Sugar Cookie</p> <p>Milk White 1% Low Fat Milk Chocolate Skim Milk</p>

This institution is an equal opportunity provider.

Please send photos for the
Jim Stone Elementary Yearbook to:
jimstoneyearbook@gmail.com



Welcome to Jim Stone Elementary!

Please help us keep you informed.

1. Download the Conway Public Schools App.

Search "Conway Public Schools" in the Apple App Store or the Google Play Store.

Once you have the app downloaded, add your student(s) to the app to get the most up to date information.

To add your student(s) to the app you need to:

1. Select the Conway Public Schools App.
2. Select the "Student Info" icon.
3. Enter the login information for your student.
4. Your student(s) should appear after the correct information is entered.



Conway Public
Schools
Education

There is also a step-by-step guide with pictures, along with other helpful information for the app at this website:

<http://www.conwayschools.org/mobile-app.html>

2. Like us on Facebook.



3. Follow us on Twitter.



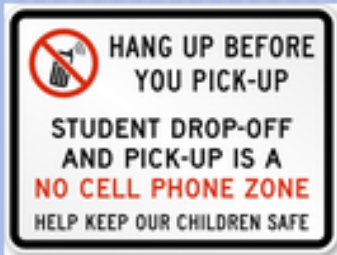
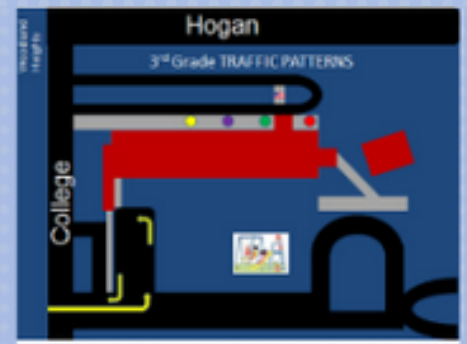
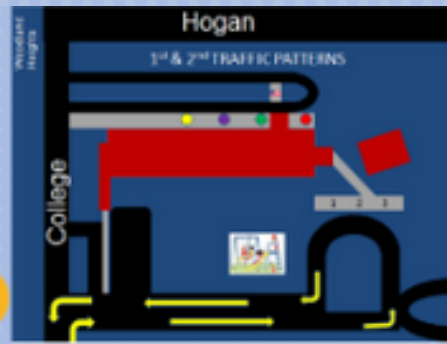
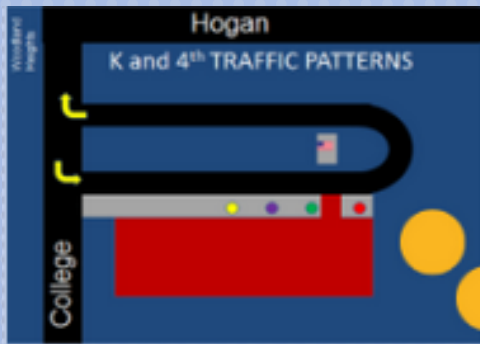
4. Keep your information current. If phone number or email address changes, please let the front office know.



PLEASE RE-ENROLL
ALL PARTICIPANTS ARE REQUIRED TO RE-ENROLL EACH YEAR
It's really easy. [Click here for more information.](#)

To Enroll in the Kroger Community Rewards Program:

1. Register online at krogercommunityrewards.com.
2. Be sure to have your Kroger plus card handy. If you don't have one, they are available at the customer service desk at Kroger.
3. Click on Sign In/Register. If you don't have an online Kroger account, click on Sign Up Today in the New Customer box and follow the directions to create an account. Choose Salem Road as your favorite store. If you do have an account, click on My Account and use your email address and password to proceed to the next step.
4. Click on Edit Kroger Community Rewards information and input your Kroger Plus card number.
5. Update or Confirm your information.
6. Enter **NPO #96365**, select Jim Stone from the list and click on confirm.
7. To verify you are enrolled correctly, you will see Jim Stone Elementary's name on the right side of your information page.
8. REMEMBER, purchases will not count until you register your card and you must swipe your card when shopping for purchases to count.
9. Do you use your phone number at the register? Call 800-576-4377, select option 4 to get your Kroger Plus card number.



Daily Schedule



7:30 Building Open

7:30-8:00 Students Report to Cafeteria

8:00 Teachers and Students Report to Classrooms

8:10 Tardy Bell

11:00-1:00 Lunch

3:10 Day Care and Specialized Transportation Dismissal at North End

3:10 Car Rider Dismissal at South, Front, and North End

3:25 Bus Rider Dismissal at North End



Lunch Schedule

Kindergarten Lunch: 11:00-11:30

First Grade Lunch: 11:20-12:00

Third Grade Lunch: 11:50-12:20

Second Grade Lunch: 12:10-12:50

Fourth Grade Lunch: 12:30-1:00



WELCOME